



SWM584A

Multifunctional Control Switch

User Manual






SUOMEN TURVAKAUPPA OY

www.turvakauppa.com

1 Overview

Multifunctional Control Switch (SWM584A) , be used to quick switching scenarios, it is an extension of the APP's click-to-switch mode and timed-switch mode. This product has built-in low-power long-distance global open license-free RF wireless communication module, must be connected to the BASE Smart Home security system in order to operate.

There are 5 buttons in this control switch. The specific functions are as follows:

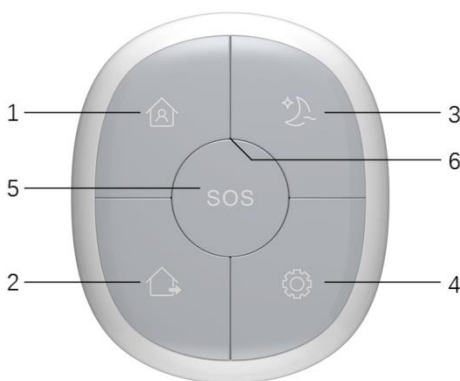
-  One-click to home mode.
-  One-click to away mode
-  One-click to sleep mode
-  One-click switch to the specified mode (including custom profile mode)
-  SOS emergency call button in the middle.

2 Features

- Design of the device is simple and generic.
- There are five buttons, one of which allows the user to customize.
- Low standby current, long battery life.
- SiterLink wireless communication protocol, safe, reliable, convenient.
- Wireless distance is more than 30 meters.
- Easy to join BASE Smart Home security system.

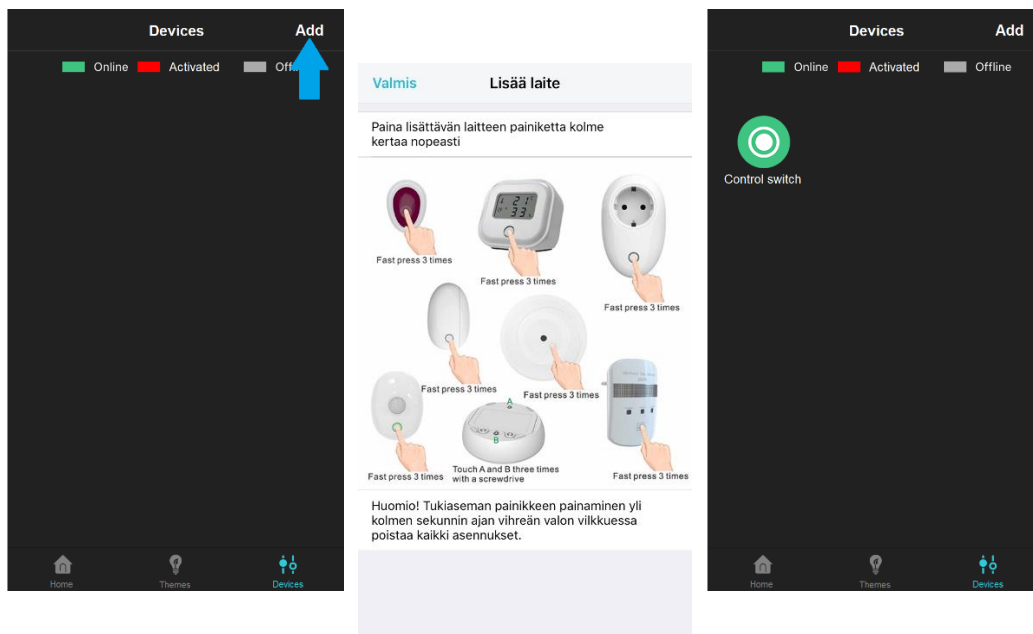
3 Illustration

Number	Name
1	Home mode button
2	Away mode button
3	Sleep mode button
4	Custom button
5	Emergency call button
6	LED



4 Adding to BASE system

It needs the cooperation of SWM188A (gateway) to be added to the BASE Smart Home security system.



Step 1

Step 2
Press the button of this
product 3 times quickly.

Step 3

5 Technical Specifications

Power input	DC3V(CR2450×1)
Standby current	≤4uA
Trigger current	≤40mA
Frequency	868MHz
Wireless distance	≥30 meters@ in an open air
Environment	0~+40°C, ≤95%RH Non-condensate
Environmental standards	RoHS
Size	62×53×16mm

6 Troubleshooting

Number	Problems	Reasons	Solutions
1	When any button is pressed, the indicator does not flash and the APP status does not change.	Battery exhausted.	Replace battery.
2	When any button is pressed, the indicator flashes, but the APP status does not change	Low battery power.	
		Distance between gateway and this device is too large	The visual distance between the two cannot exceed 100 meters.
		Gateway doesn't connect to the Wi-Fi network.	Check Wi-Fi or reconfigure the network.
3	The custom button has no function, but the function of other 4 buttons is normal.	Undefined its function	Click the button icon on the APP device page and define its function.
4	The indicator light keeps on always after the battery is installed.	Product broken.	Contact the dealer to repair or replace the product.

Statement

The information in the User's Manual is absolutely correct at the time of publication, however we are not responsible for the application of this document. The application mentioned in this document is for illustration purposes only. We do not guarantee or represent that these applications without further modifications are appropriate and that we also have the right to modify the product without any notice. For the latest information, please refer to our website <http://www.china-siter.com>.

SITERWELL ELECTRONICS CO.,LIMITED

Address: No.666 Qingfeng Road, Jiangbei District,
Ningbo, Zhejiang

Phone: 0086-574-87729576

Postcode: 315000

Web: www.china-siter.com

Importer: Suomen Turvakauppa Oy, Kaarina,
Finland.

