

Alarm silence facility

When the smoke alarm has detected a smoke and turns into the alarm mode, you can mute the alarm for a minimum of 5 minutes and a maximum 15 minutes by pressing a button. After that the smoke alarm automatically resets and returns into a normal operation mode. If there are still particles of combustion in the air, the smoke alarm will turn into the alarm mode again. **WARNING:** Before using the alarm silence facility, always identify the cause of the alarm and make sure that the circumstances are safe.

Low battery mode

When the battery is running low, the smoke alarm will indicate this with a repetitive beep and flash for approximately 30 days. **WARNING:** This smoke alarm is equipped with a non-replaceable battery. When this warning occurs, replace the device as soon as possible! The acoustic low battery warning signal can be muted for ten hours by pressing the test button. The smoke alarm is still functioning and able to detect smoke when it's in this mode.

Fault warning mode

When the smoke alarm is not functioning properly, it will turn into the fault warning mode. Try cleaning the smoke alarm (see paragraph maintenance) or replace the smoke alarm!

Maintenance

- Test this smoke alarm weekly for correct function by using the test facility. If the smoke alarm functions correctly, it will generate a loud beep. Due to the loudness of the alarm, make sure that you always stand at arm's length distance from the unit when you are testing. If the smoke alarm does not generate an acoustic signal, it must be replaced immediately!
- Clean the smoke alarm at least once per month to remove dirt, dust or debris. Use a vacuum cleaner with a soft brush and vacuum all sides and covers of the smoke alarm. Do not remove the top cover of the smoke alarm to clean it inside.
- Do not attempt to repair this smoke alarm. If the smoke alarm shows a damage related to its functionality, it must be replaced!
- Trouble shooting: False alarm is often caused by dust or steam.

Recycling and disposal



The WEEE symbol means that this product and its batteries must be disposed separately from other household waste. When they reach their end of life, take them to a designated waste collection point in your area to guarantee a safe disposal or recycling. Protect the environment, human health and natural resources!

SMOKE ALARM

PV522A USER MANUAL



SITERWELL
www.china-siter.com

Overview LED & acoustic signaling

Operating mode	LED signal (flash)	Acoustic signal (beep)	Description mode
Normal	1 x per 40 seconds	None	Device is functioning properly
Test	1 x per second (3 x) / pause of 1,5 seconds	1 x per second (3 x) / pause of 1,5 seconds	Device is being tested
Alarm	1 x per second (3 x) / pause of 1,5 seconds	1 x per second (3 x) / pause of 1,5 seconds	Device has detected smoke
Alarm silence	1 x per 8 seconds	None	Smoke alarm is muted
Low battery	1 x per 40 seconds (simultaneously with beep)	1 x per 40 seconds (simultaneously with flash)	Battery is running low
Low battery silence	1 x per 40 seconds	None	Low battery warning is muted
Fault warning	1 x per 40 seconds (alternating with beep)	1 x per 40 seconds (alternating with flash)	Device is not functioning properly

Identification

Product type: Smoke alarm Item
 number: PV522A
 Supplier name: Siterwell Electronics Co., Limited Supplier
 address: No.666 Qingfeng Road,
 Jiangbei District, Ningbo, Zhejiang
 Province, China, 315034
 Website supplier: www.china-siter.com
 Importer: Suomen Turvakauppa Oy, Kaarina,
 Finland

CE 16
 DoP: PV522A-002
 EN 14604:2005 + AC:2008
 0333
 Fire Safety



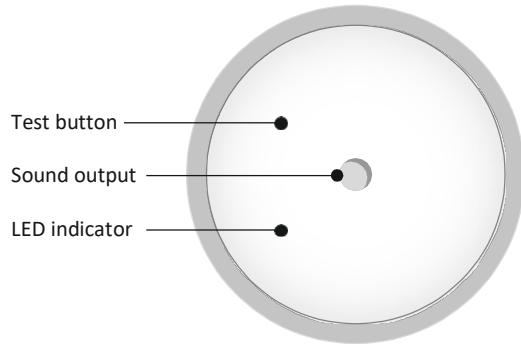
G 217022

Thank you for purchasing our smoke alarm!

Please read these instructions carefully and store them in a safe place where you can access them easily.

Product description and intended use

This is a smoke alarm with an optical sensor for installation in residential buildings, apartments and rooms with residential-like use. Smoke alarms are designed to provide an early warning of fire smoke and fires to persons present, so that these persons can react appropriately to the hazardous event. Always consult local regulations for smoke alarms.



Product specifications

Detection method	: Optical
Power supply	: Sealed battery
Battery lifetime	: 10 years
Alarm volume	: > 85 dB (A) at 3 meters
Alarm sensitivity	: 0,096 - 0,148 dB/m
Monitored area	: 20 - 40 m ²
Operating temperature	: 0 °C - 40 °C
Operating humidity	: < 93 %
Date of replacement	: See product label
Individual alarm indicator	: Yes
Alarm silence facility	: Yes Hush time: 5-15 minutes
Low battery warning	: Yes
Low battery silence facility	: Yes Hush time: 10 hours
Installation in leisure accommodation vehicles	: Yes
Mounting location	: Ceiling
Interconnectable	: No

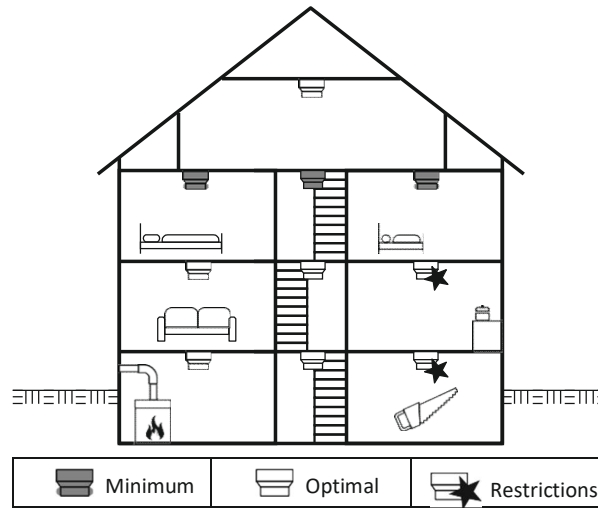
Warnings:

- To prevent injury, this apparatus must be securely attached to the ceiling in accordance with the installation instructions.
- Batteries should not be exposed to excessive heat such as sunshine, fire or the like.
- Do not paint or cover the smoke alarm.

Where to install a smoke alarm

Smoke alarm must be installed in such a way that it can be reached unhindered by the fire smoke so that fire can be reliably detected during the development phase.

- Install at least in sleeping areas (especially children's rooms);
- Install at least in escape rooms;
- In the middle of the ceiling of a room;
- At least 50 cm away from the wall and other objects;
- Maximum installation height of 6 meter.



Where to install a smoke alarm in rooms with special geometries

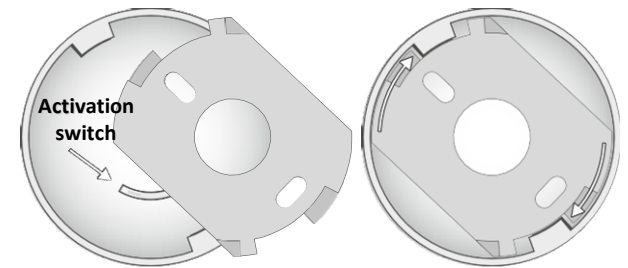
- Corridors with a maximum width of 3m: Max. 15m between 2 smoke alarms. Max. 7,5m to the front side of the gallery and smoke alarms at edges/crossings of corridors.
- Rooms with sloping ceilings:
 - If the ceiling inclination is > 20° to the horizontal: Smoke alarms must be installed at least 0.5 m and at most 1 m from the ceiling top.
 - Partial roof slopes: If the flat ceiling is ≤ 1m wide, consider as ceiling inclination is of > 20°. If the flat ceiling is >1m wide, consider as flat ceiling.
- Rooms with subdivided ceilings:
 - Height of the subdivisions is ≤ 0.2 m: Beams without consideration; smoke alarm may be installed on the beams as well as on the ceiling.
 - Height of subdivisions is > 0.2 m and area of ceiling panels > 36 m²: Smoke alarm should be installed in each ceiling panel.
 - Height of subdivisions > 0.2 m and area of ceiling panels ≤ 36 m²: Individual ceiling without consideration.

Where not to install a smoke alarm

- In an environment with a high risk of draught (e.g. close to air conditioning, fans and ventilation outlets). The movement of air can impair the penetration of fire smoke into the smoke alarm.
- Areas where occurs combustions regularly, such as kitchens.
- Areas with high humidity such as bathrooms, or close to devices such as dish washers or washing machines.

Activation

- Before commissioning the smoke alarm, it is important to activate and test it for correct operation.
- Place the mounting plate on the smoke alarm and secure it by turning it clockwise. When it's properly tightened, the smoke alarm is activated by the activation switch and generates a loud beep.
- Test the correct activation of your smoke alarm by pressing the test button. If no sound is generated, the smoke alarm is not activated properly and should not be used!



Mounting

- Remove the mounting plate from the smoke alarm;
- Place the mounting plate on a desired installation location and mark where the holes should be drilled;
- Drill two holes with a diameter of 5 millimeters;
- Push the plastic plugs into the holes;
- Insert the screws into the mounting plate, and tighten them firmly into the plugs;
- Place the smoke alarm on the mounting bracket and secure it by turning it clockwise;
- When it's properly tightened, the smoke alarm generates a beep;
- Test the correct operation of your smoke alarm by pressing the test button. If no sound is generated, the smoke alarm is not functioning properly and should not be used!

