



SWM350A

Intelligent plug

User Manual

**IMPORTER: SUOMEN TURVAKAUPPA OY**

[www.turvakauppa.com](http://www.turvakauppa.com)

## 1 Overview

**Use smart plug** (SWM350A), to control all kinds of devices with electrical power, such as lamps, electric fans, water dispensers, heaters, humidifiers and dehumidifiers. You can control the socket and see the real-time status of the socket through the BASE APP.

Notice! Information in this manual may change according to BASE application system updates.

- Please check the latest version from our website [www.safewith.me](http://www.safewith.me).

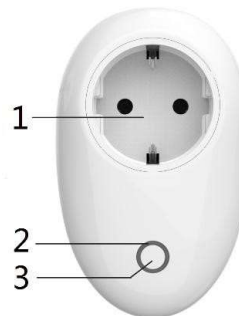
According to the function of scene list, intelligent lighting (the light is inserted in the smart socket) can be activated when the **Motion Detector** detects someone, or you can automatically open exhaust fan when the smoke alarm detect the smoke. Please refer to the '**BASE User Guide**' for the detailed operation.

## 2 Features

- 100~240VAC, 50/60Hz, global general-purpose.
- Energy saving and environmental protection.
- MC-DE3 wireless communication protocol, safe, reliable and convenient.
- Wireless distance is more than 100 meters.
- Easy to connect BASE smart home security ecosystem.
- Plug and play.

## 3 Illustration

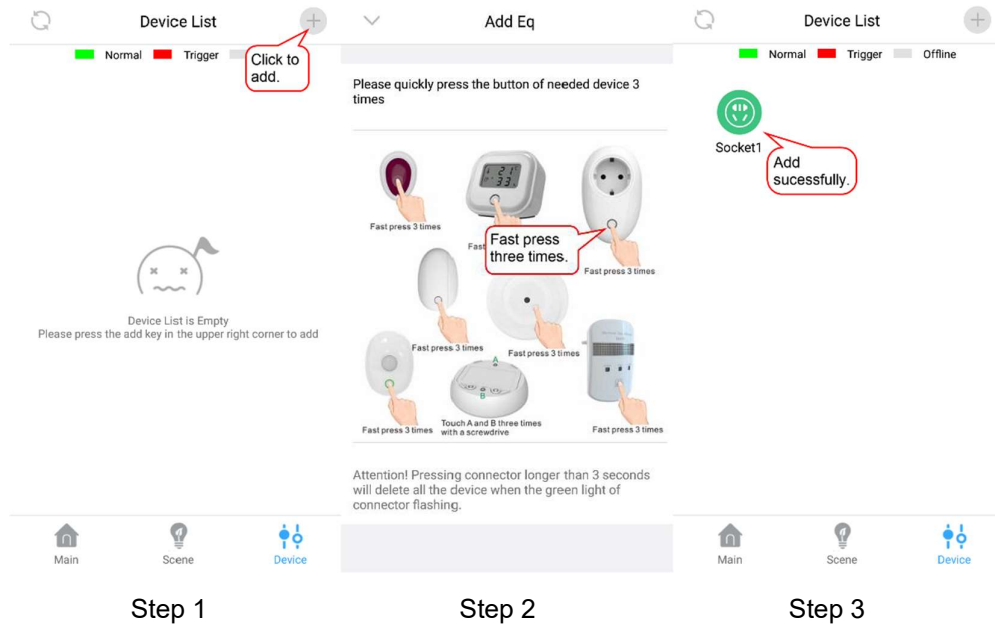
Number	Name
1	Jack plug
2	LED
3	Button



## 4 Operation instruction

### 4.1 Adding to BASE smart home ecosystem

It needs the cooperation of SWM188A (gateway) to be added to the BASE intelligent security system, please refer to the '**BASE User Guide**' for details.



### 4.2 Status Description

- Red indicator always on or red icon in APP: Smart plug is on.
- Red indicator always off or green icon in APP: Smart plug is off.

## 5 Technical Specifications

Power input	100~240VAC,50/60Hz
Standby current	2000W(10A)
Trigger current	≤0.5W
Frequency	868MHz
Wireless distance	≥100meters
Switch life	≥50000 times
Environment	-10~+50°C, ≤90%RH Non-condensate
Safety standard	CCC
Environmental standards	RoHS
Size	105×65×35mm

## 6 Troubleshooting

Number	Problems	Reasons	Solutions
1	The icon in APP doesn't change, but LED is on while pressing the button.	Gateway doesn't connect to the Wi-Fi network.	Check Wi-Fi or reconfigure the network.
		Distance between plug and gateway is too large.	Visual distance between the two cannot exceed 100 meters.
2	The icon in APP and LED don't change while pressing the button.	Smart plug is not powered.	Check the power
3	Click the switch button of smart plug in the APP, the plug will not	Gateway doesn't connect to the Wi-Fi network.	Check Wi-Fi or reconfigure the network.

	turn on or off.	Smart plug Isn't added BASE smart security system.	Refer to section 4.1
--	-----------------	--	----------------------

## Statement

The information in the User's Manual is absolutely correct at the time of publication, however we are not responsible for the application of this document. The application mentioned in this document is for illustration purposes only. We do not guarantee or represent that these applications without further modifications are appropriate and that we also have the right to modify the product without any notice. For the latest information, please refer to our website <http://www.china-siter.com>.

### **SITERWELL ELECTRONICS CO.,LIMITED**

**Address:** No.666 Qingfeng Road, Jiangbei District,  
Ningbo, Zhejiang

**Phone:** 0086-574-87729576

**Postcode:** 315000

**Web:** [www.china-siter.com](http://www.china-siter.com)

**Importer:** Suomen Turvakauppa, Kaarina,  
Finland.